

**copa\*cogeca**  
european farmers european agri-cooperatives



Kindly hosted by  
Representation of the Free State of Bavaria  
to the European Union



## 6<sup>th</sup> Forest Innovation Workshop

# Administration of innovation in forestry and agroforestry: Enabler, barrier or both?

**Kathrin Böhling**



**LWF** Bavarian State Institute  
of Forestry

kathrin.boehling@lwf.bayern.de

**Dates: 11-12 February 2025 | Location: Representation of the Free State of Bavaria to the European Union, Rue Wiertz 77, 1000 Brussels**



<http://www.forestinnovation.eu/>

## Rules and routines in administrations

- enable consistently effective action across time and space
- are rigid phenomena of social life and bureaucratic artifacts that do not change easily
- contain the seeds of development and change

# Administration of innovation

## The example of EIP Agri OGS



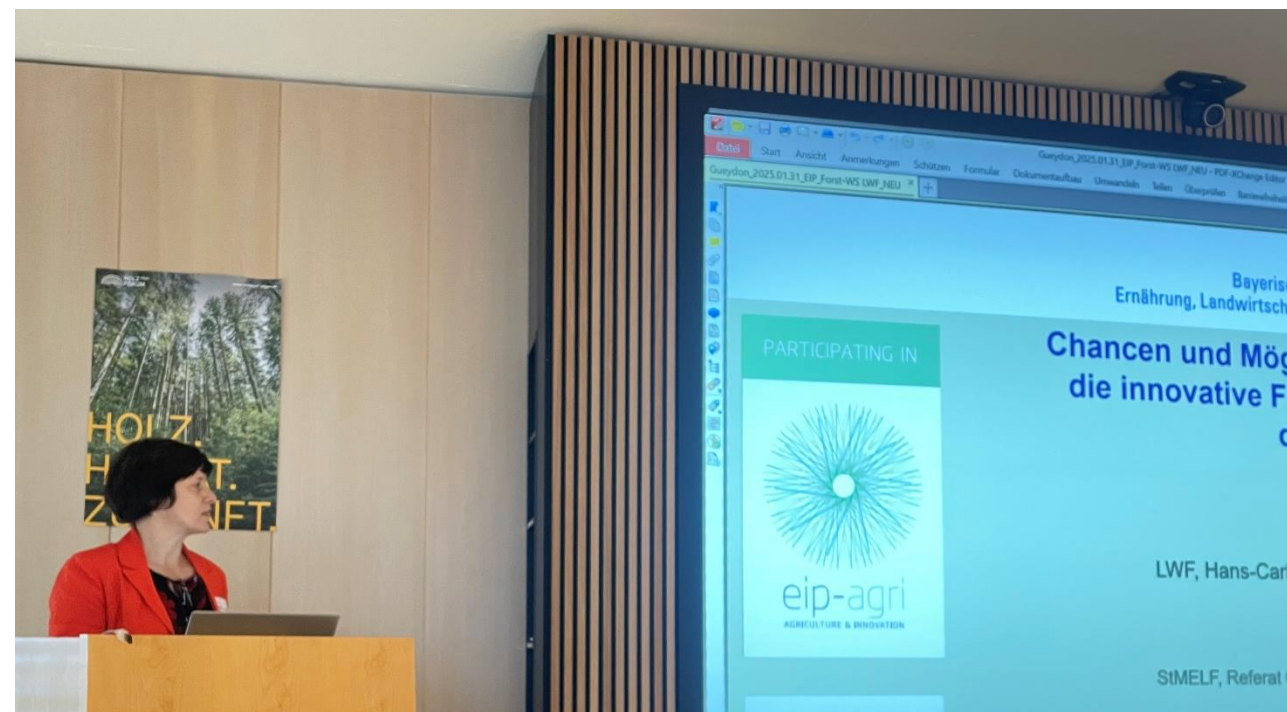
### About Operational Groups

- Multi-actor innovation partnerships, incl. farmers and foresters, research, associations, business
- Temporary, collaborative projects based in “interactive innovation model” (complementary, bottom-up, co-creative)

## Rules for OGS



- OG as corporate entity
- Project design
- Eligible costs
- Funding volume
- Selection procedure
- Coordination of government authorities involved
- Accounting and reporting
- Payment of approved funding



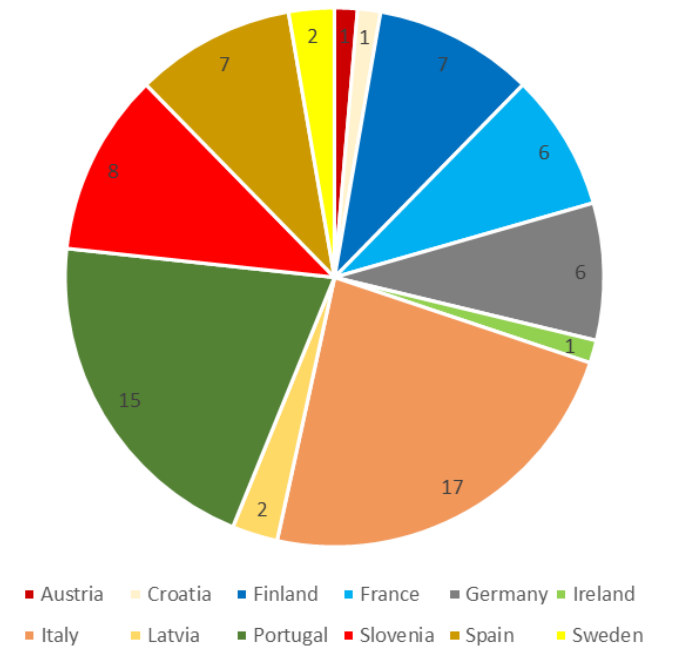
# Evidence from FOREST4EU

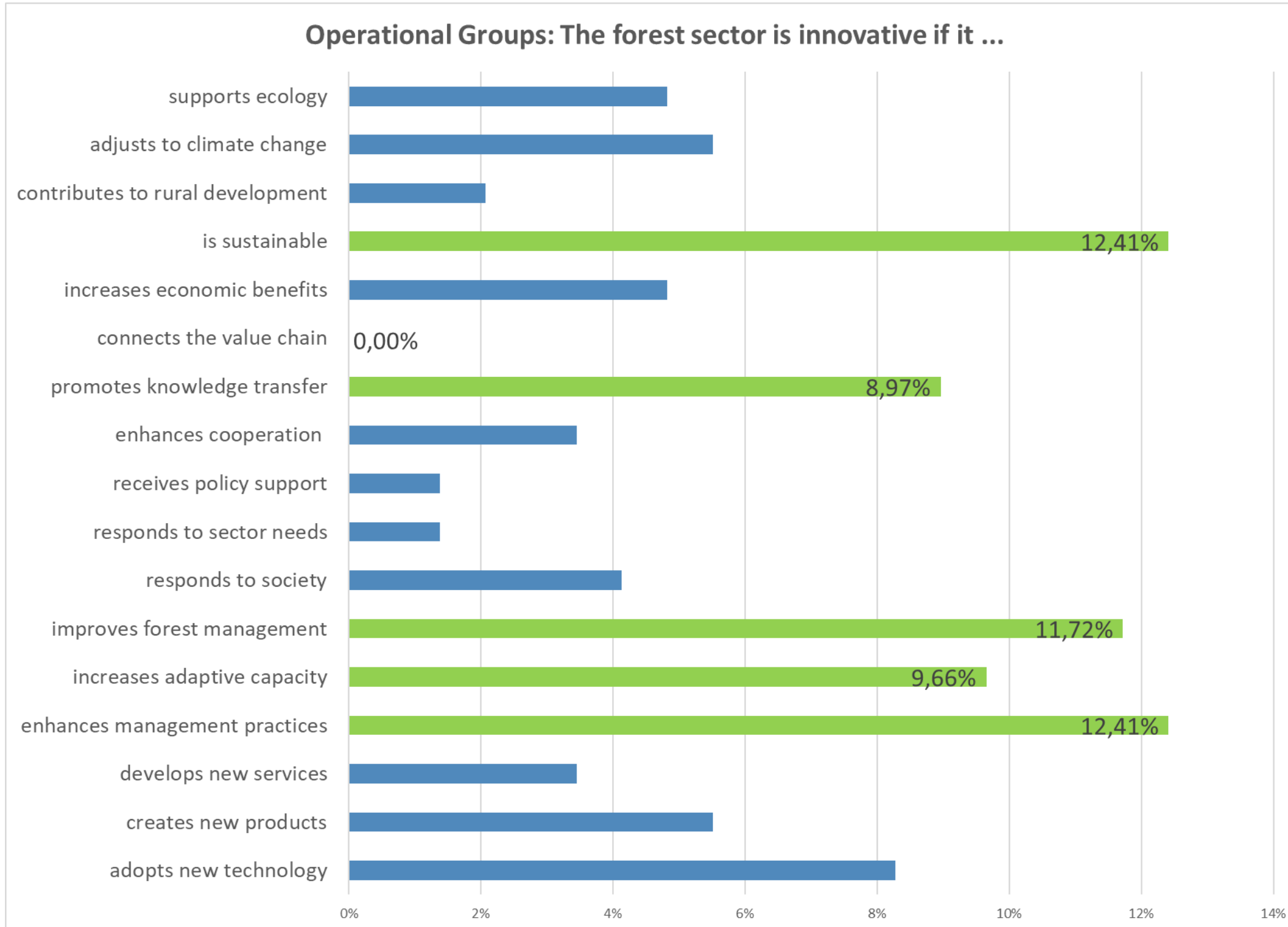
## Administration and project management of EIP Agri funding for innovation

Survey findings from FOREST4EU innovation survey (n=326 – here: OG members only, n=73)

Application procedure	☹️
Authority support in difficult situations	☹️
Securing funding	😞
Dealing with de minimis rule in forestry	😞
Managing with limited resources	😞
Learning how to work together	☹️
Perception of project management	☹️
Recommend EIP-Agri funding to peers	😊

Response from OGs in FOREST4EU survey (n=73)





## The forest sector is innovative if it:

- is sustainable
- enhances management practices
- improves forest management
- increases adaptive capacity of institutions
- promotes knowledge transfer

## Conclusion

- The interactive innovation model seems to take hold in forestry and agroforestry
- Government authorities facilitate uptake of EIP Agri funding if responding to needs of (potential) beneficiaries
- Innovation in forest sector is not primarily about technological fixes but about managerial and institutional change
- Authorities can support these changes with a reliable innovation system that sustains interactive learning over time and allows for exploration



Thanks a lot for your attention!

