

copa*cogeca
european farmers european agri-cooperatives



Representation of the Free State of Bavaria
to the European Union

Kindly hosted by



6th Forest Innovation Workshop

Management of the cork oak forest against the Pinhole borer (*Platypus cylindrus*), at Sor region



Luís Bonifácio

INIAV - Institute for Agrarian and
Veterinary Research



Instituto Nacional de
Investigação Agrária e
Veterinária, I.P.

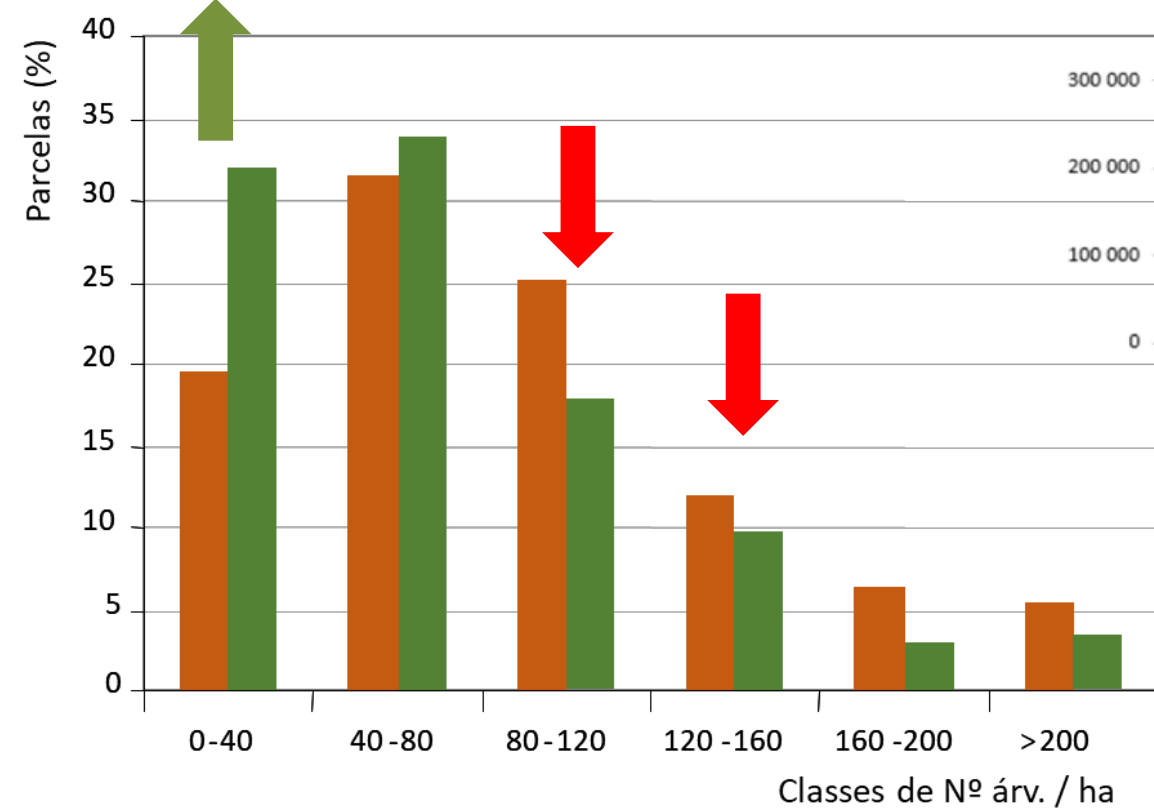
Luis.bonifacio@iniav.pt

Dates: 11-12 February 2025 | Location: Representation of the Free State of
Bavaria to the European Union, Rue Wiertz 77, 1000 Brussels

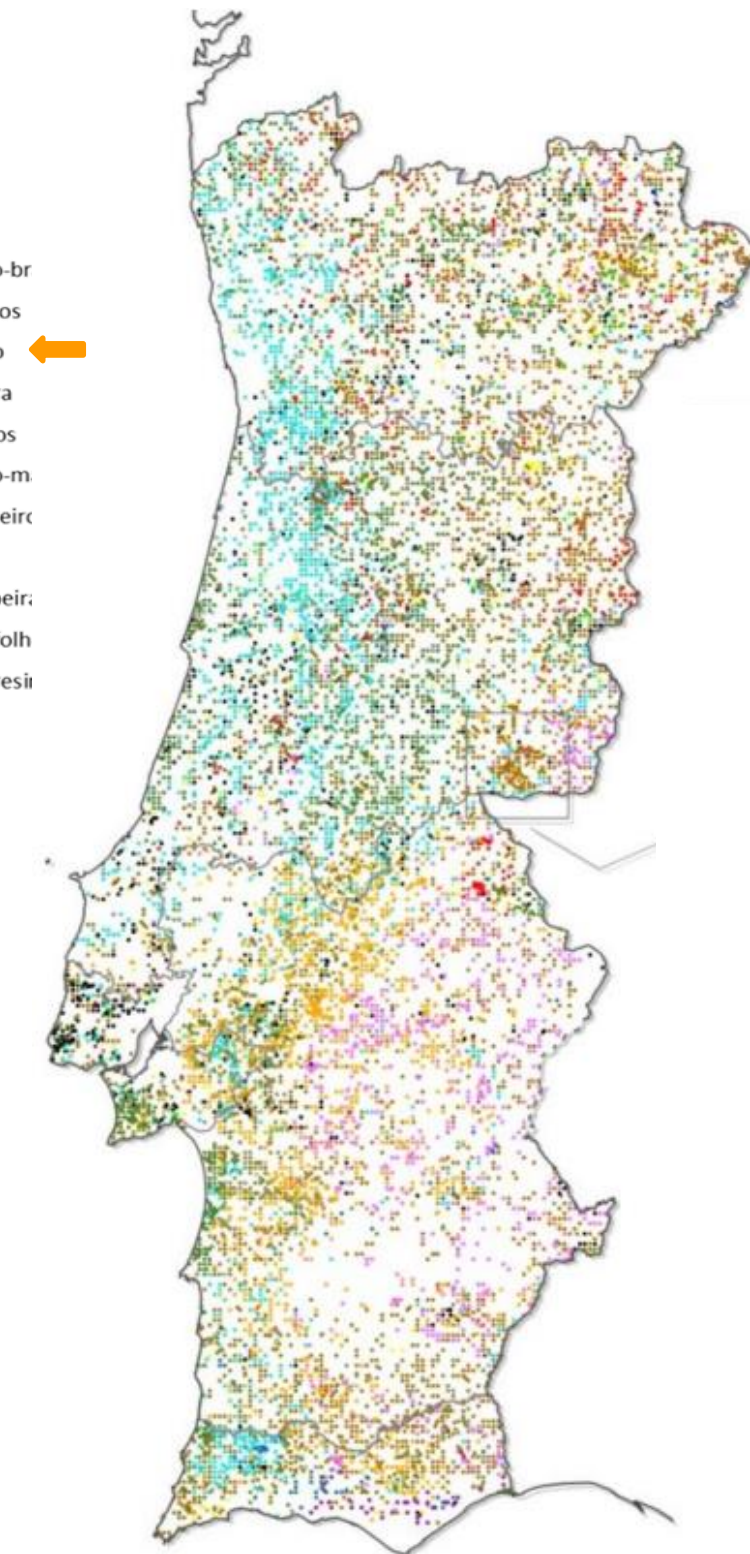
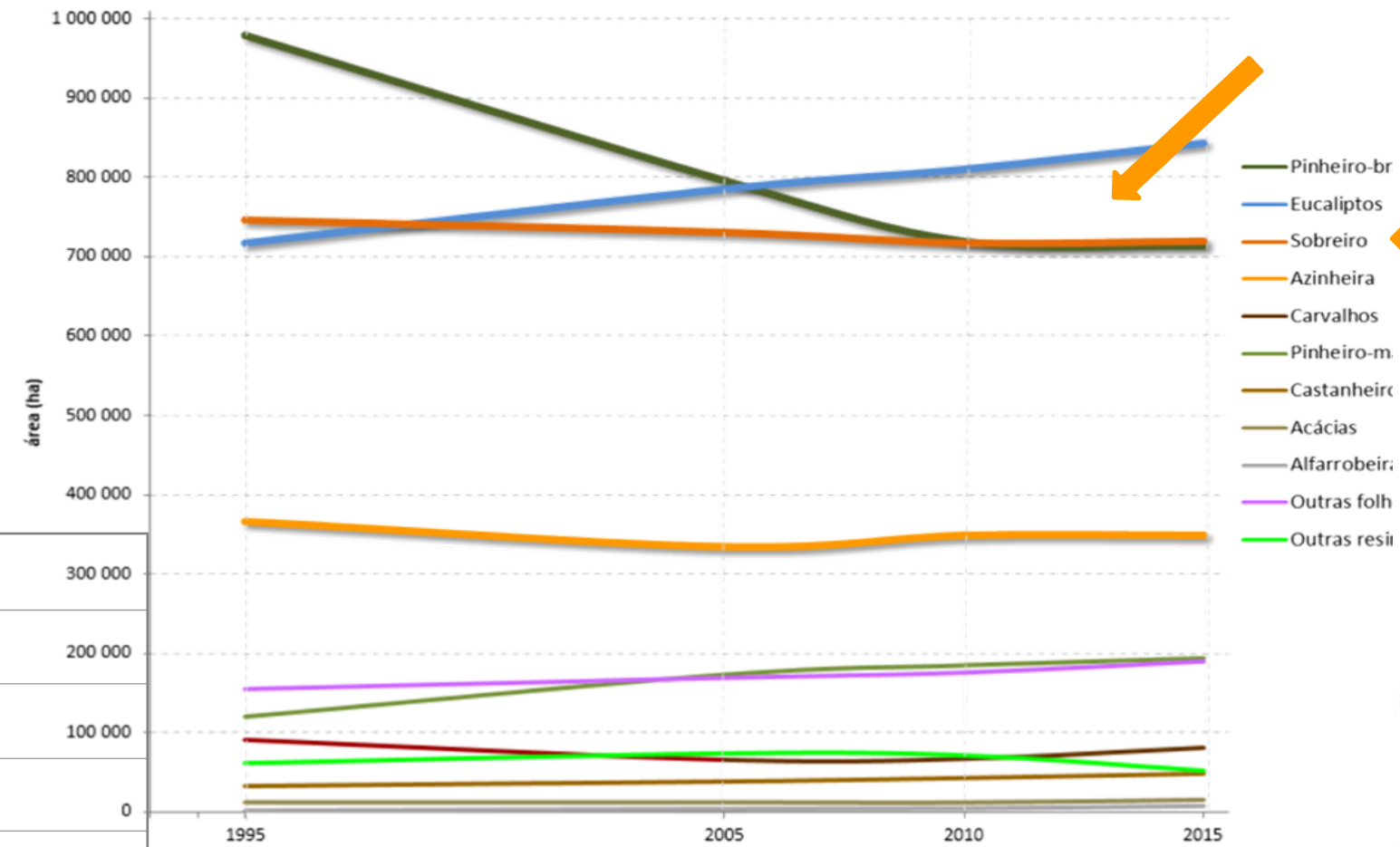


<http://www.forestinnovation.eu/>

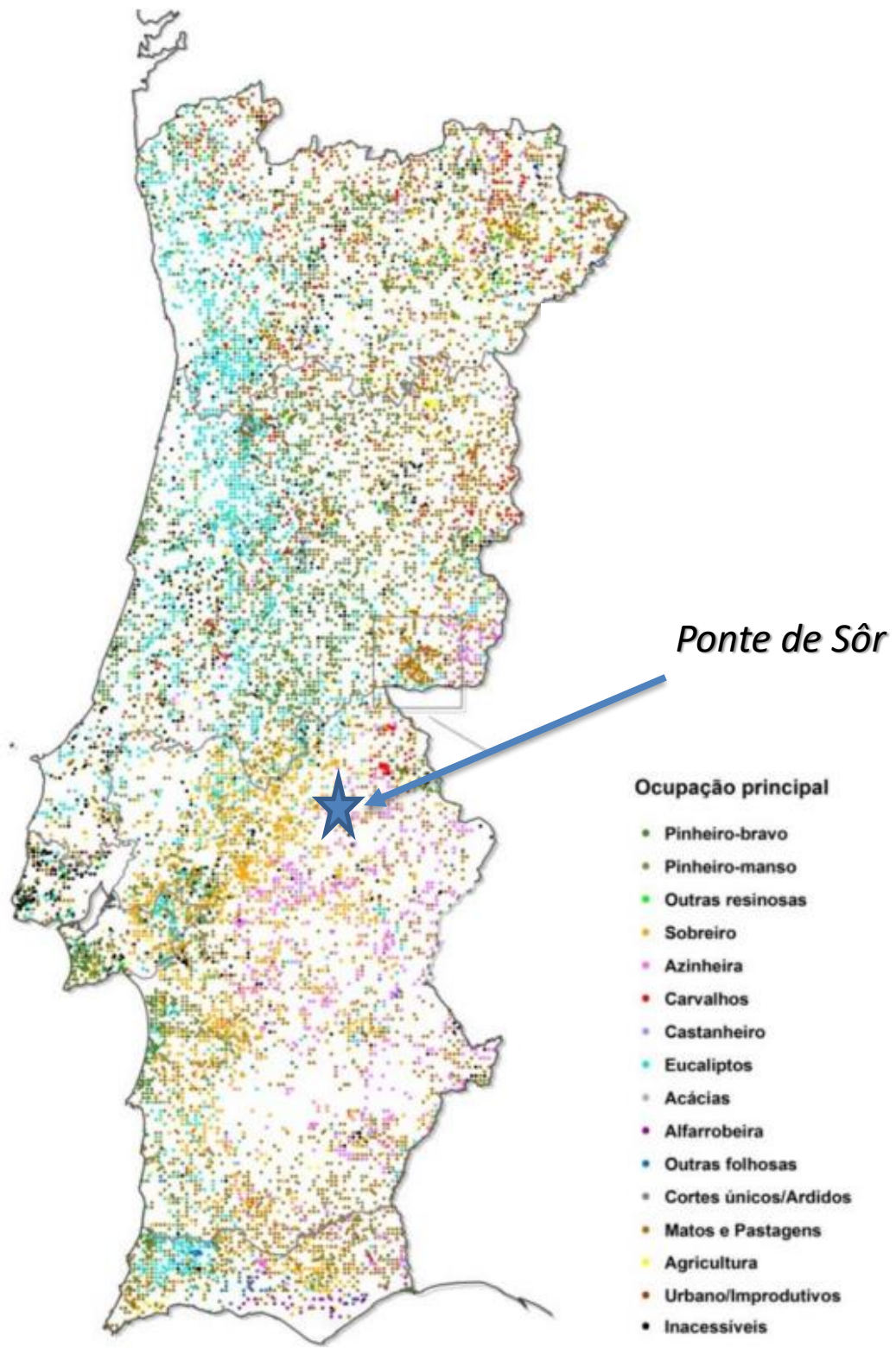
Cork oak (*Quercus suber*)



■ IFN1995 ■ IFN2005

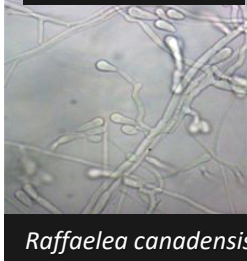
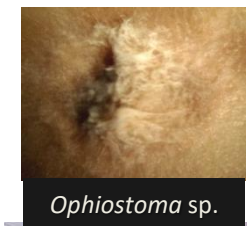
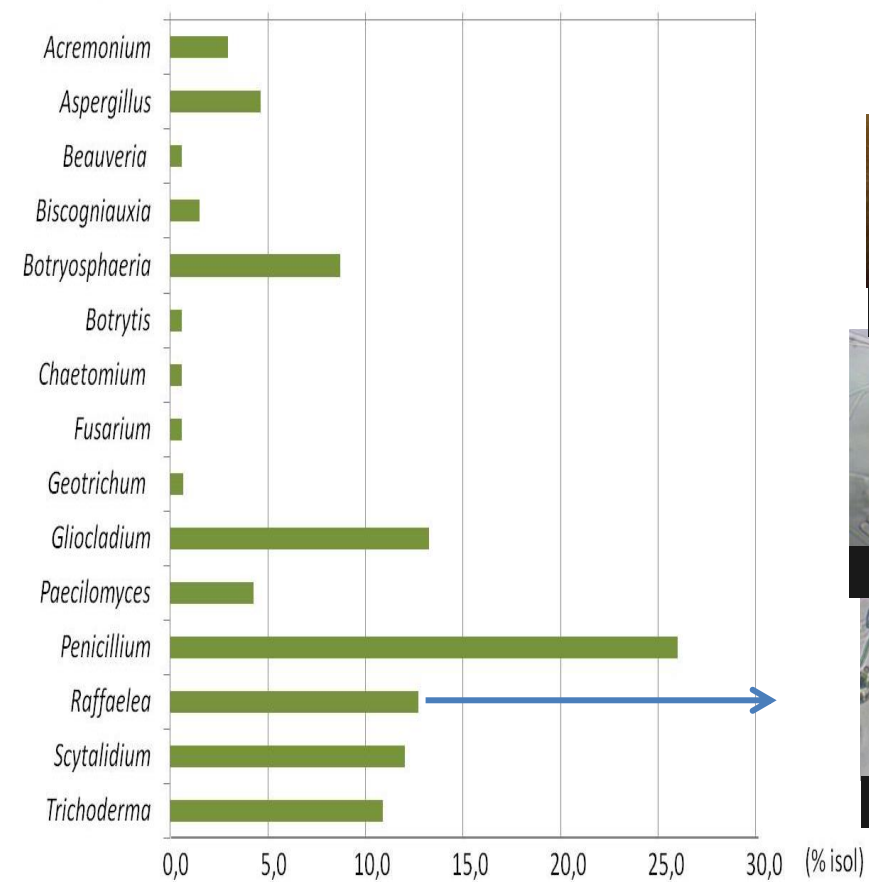
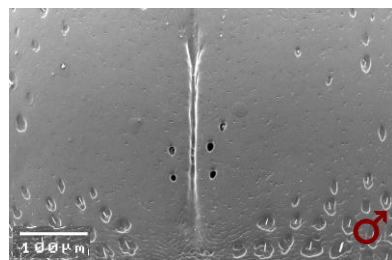
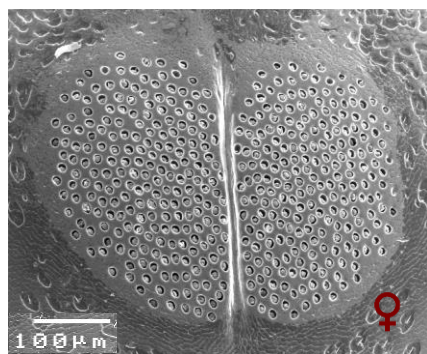
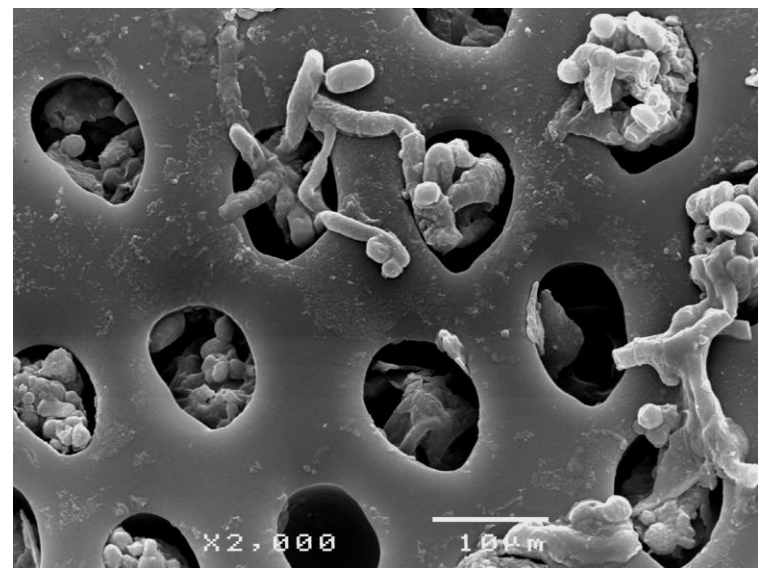
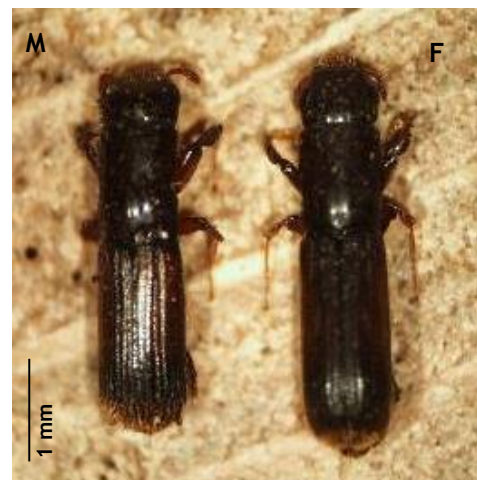


- Ocupação principal
- Pinheiro-bravo
 - Pinheiro-manso
 - Outras resinosas
 - Sobreiro
 - Azinheira
 - Carvalhos
 - Castanheiro
 - Eucaliptos
 - Acácias
 - Alfarrobeira
 - Outras folhosas
 - Cortes únicos/Ardidos
 - Matos e Pastagens
 - Agricultura
 - Urbano/Improdutivos
 - Inacessíveis



Partners	
AFLORSOR – Forest Producers Association from Ponte de Sôr Region	Forest Owners Association
INIAV - Institute for Agrarian and Veterinary Research	Research Laboratory
FLORGÉNESE LDA	Enterprise of Chemical and Forest products
SOCIEDADE AGRICOLA FELIZARDO PREZADO	Private forest owner
ALVES BENTO SAG ,LDA	Private forest owner
SANTA CASA MISERICORDIA PONTE DE SOR	Non-Profitable association

Oak Pinhole borer (*Platypus cylindrus*)



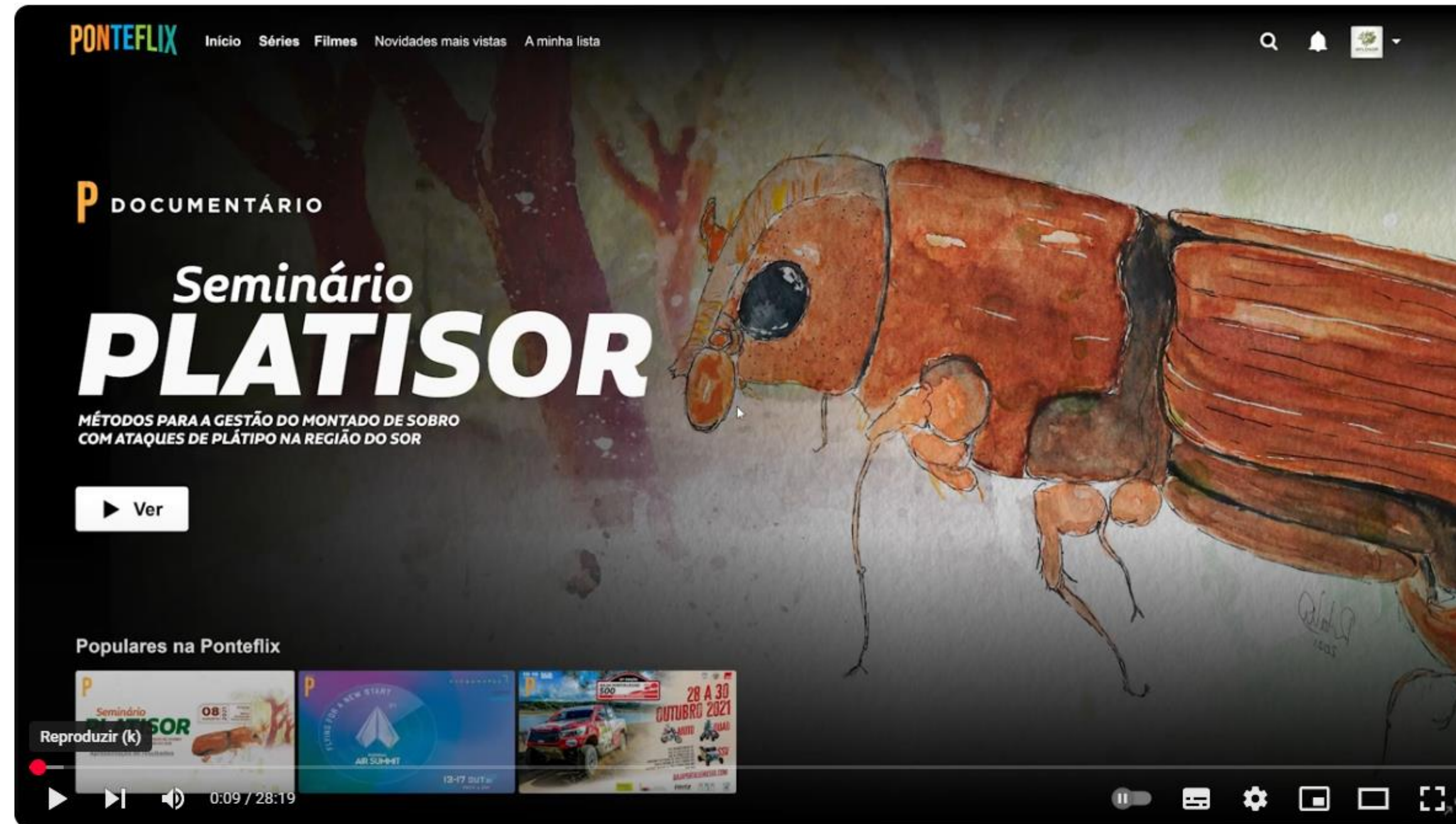
Ambrosia beetle - Establishes relationships with fungi (e.g. *Raffaelea quercina*, *R. montetyi*, *Ceratocystiopsis quercina*, others) for survival and host colonization

Galleries cut the sap flow

Until 1980's - Present only in dead or weakened trees

Post 1980's - Present also in apparently healthy trees

<https://www.aflosor.com/platisor>



Vídeo Documentário PLATISOR | Apresentação de Resultados Final

https://www.youtube.com/watch?v=SHEFtm9_GN8



Thank you !

Luis.bonifacio@iniav.pt



Instituto Nacional de Investigação Agrária e Veterinária, I.P.

Av. da República, Quinta do Marquês, 2780-157 Oeiras, Portugal

Tel : (+ 351) 214 403 500 | Fax : (+ 351) 214 403 666

www.inia.pt